

# REDE DE PROTEÇÃO E CONSERVAÇÃO DA SERRA DO AMOLAR

## AMOLAR NETWORK 2020 REPORT



Rede de Proteção  
e Conservação  
da Serra do Amolar



INSTITUTO HOMEM  
PANTANEIRO



INSTITUTO HOMEM  
**PANTANEIRO**

**Ângelo Rabelo**

Chairman

**Letícia Larcher**

Executive Secretary / Technical Coordinator

## **BOARD**

### **Board of Directors**

Fabio Roque - Technical Director

Eliza Mense - Administrative-Financial Director

### **Board of Trustees**

Neiva Guedes - CEO

Joice Marques - Counselor

### **Fiscal Council**

Alexandre Bossi - CEO

Grasiela Porfirio Petry - Counselor

Eduardo Folley Coelho - Counselor



INSTITUTO HOMEM  
**PANTANEIRO**

## TECHNICAL TEAM

Executive Secretary: **Letícia Larcher**

Operational Coordination: **Isabelle Bueno**

Financial Administrative Coordination: **Thalytta Oyos**

Purchasing Management and Controls: **Wellington Gonçalves Fernandes**

Administrative Assistant: **Welvyn Maciel**

General Services: **Marcia Mendes**

Coordination of the “Amolar Experience” Program: **Luiz Ricardo Julião Rocha**

Coordination of the “Cabeceiras” Program: **Angélica Guerra**

Coordination of the “Felinos Pantaneiros” Program: **Diego Viana**

Coordination of the “Alto Pantanal” Brigade: **Bruno Águeda**

Environment Warding: **Sergio Eduardo Barreto**

Monitoring/Technology: **Josiel de Oliveira**

Veterinary Service Center: **Geovani Tonolli**

Protected Area Management: **Vanessa Moraes**

Operation of Protected Areas:

**Carlos Adriano Ximenes**

**Joana Alpaza Huampo**

**Keli Monique de Oliveira Silva**

**Wilson Malheiros**

“Alto Pantanal” Brigade:

**Cleyton Alves Varela**

**Manoel Garcia da Silva**

**Renato Gonçalves de Paula**

**Washington Gonçalves Rojas**

**Otavio Henrique Ximenes Fabrão**

We would like to thank the collaborators **André Zumak, Barbara Banega, Elvis Oliveira, Joelson Soares, Marcos Gonçalves e Wagner Tolone** who were part of our team in 2020 and were fundamental in the activities we carried out.



“To compose a treaty of birds  
First, there must be a river with trees  
and palm trees on the banks.  
And inside the backyards of houses, there must be at least  
guava trees.  
And there must be swamps and swamp delicacies nearby.  
There must be insects for the birds.  
Especially stick insects that are the most palatable.  
The presence of dragonflies would be a good thing.  
Blue is very important in the birds’ lives  
Because birds need to be beautiful before they can be  
eternal.  
Eternal as a Bach fugue.”

– Manoel de Barros

We dedicate our work to  
valuing all the life forms that  
were lost in 2020, in forest  
fires in the Pantanal Biome.



# Letter from IHP

## 2020, a year of loss

The planet lived one of the most remarkable years in its history, especially in the Man-Nature relationship. The pandemic established an unprecedented socio-economic leveling and determined a “curfew” and to “rethink and renegotiate” countless relationships.

Since January, our actions aimed at protecting the Serra do Amolar areas have been marked by the harbinger of something strange. The fire, on a small scale in the first semester, required numerous mobilizations for combat. Without having a rest, the weather conditions became favorable to an uncontrollable situation that happened in the second semester.

Fire, associated with climatic factors, led us to experience something unique, an “extreme event”, penalizing riverine families with permanent smoke and a threat of fire to their homes, and also, in an extreme way, a threat also to reserves.

Despite our efforts, with equipment and hired firefighters, added to the mobilization of brigades involving the federal and state government, we were unable to stop the fury of the fire. It consumed more than 90% of our territory, affecting the flora and fauna in a lasting way. In addition to the impact on wildlife, the set of extreme events, such as fire, wind, storms, caused panic and had the effect of some tragic accidents, claiming the lives of helicopter pilots.



► **The day after all this tragedy, I confess, brought us something remarkable in our soul, leaving us to feel a mixture of loss, impotence and doubts.**

Realizing that a story, with more than 20 years of dedication, had been consumed by fire, turning into a charred landscape, shook us. We managed to see the horizon when, amidst the flames of fire, we were surprised by something that brought us hope, the flame of “solidarity”.

Different people and companies turned to our organization in order to help. Volunteers came forward to fight the fire, help with logistics, food, communication and to spread the word that we need help. The positive gestures led us to find the strength to resume work and believe in an opportunity for regeneration, despite nature’s capacity for resilience.

Of the many lessons learned, without a doubt, we failed in prevention. We understand that the guidance for riverside communities and rural landowners, about

our experiencing an atypical year, could have prevented fires of such proportions. We also understand that prevention needs to happen, in its broadest sense.

Therefore, with the support of society that trusted in our work, we established a brigade called “Brigada Alto Pantanal” to act effectively in prevention in 2021. We started our work with new equipment, proper guidance, maintenance of trails, escape routes for fauna and a broad recovery project, after all, our existence as an institution is associated with the noble mission of protecting Serra do Amolar.

Thank you for your trust.

Amolar survives!



**Ângelo Paccelli Cipriano *Rabelo***  
**Cel QOPM RR**  
Chairman



INSTITUTO HOMEM  
PANTANEIRO







Rede de Proteção  
e Conservação  
da Serra do Amolar

## **Member Partners**

Parque Nacional do Pantanal Matogrossense  
Instituto Homem Pantaneiro  
Fundação Ecotrópica  
Associação Onçafari  
Fazenda Santa Tereza  
Acaia Pantanal

## **Supporting Partners**

ICMBio – Instituto Chico Mendes de Conservação da Biodiversidade  
2ª Companhia de Polícia Militar Ambiental de Mato Grosso do Sul  
Fundação Panthera  
Fundação Grupo Boticário  
CNRPPN – Confederação Nacional dos Proprietários  
de Reservas Particulares do Patrimônio Natural  
Agrotools  
ISA CTEEP  
SESC  
S.O.S Pantanal  
Lawrence Wahba  
UNESCO Paris – Fauna and Flora International

## **Investment Partners**

Group of Individual Investors



## **AMOLAR NETWORK**

1. Region
2. Nature
3. Socioeconomic context
4. History
5. Map

## **OUTCOMES**

Amolar Network

## **MANAGEMENT**

Independent Auditor's Report & Financial Statements



# AMOLAR NETWORK

Foto: Erisson Monteiro

**Pink ipê**  
*Handroanthus impetiginosus*

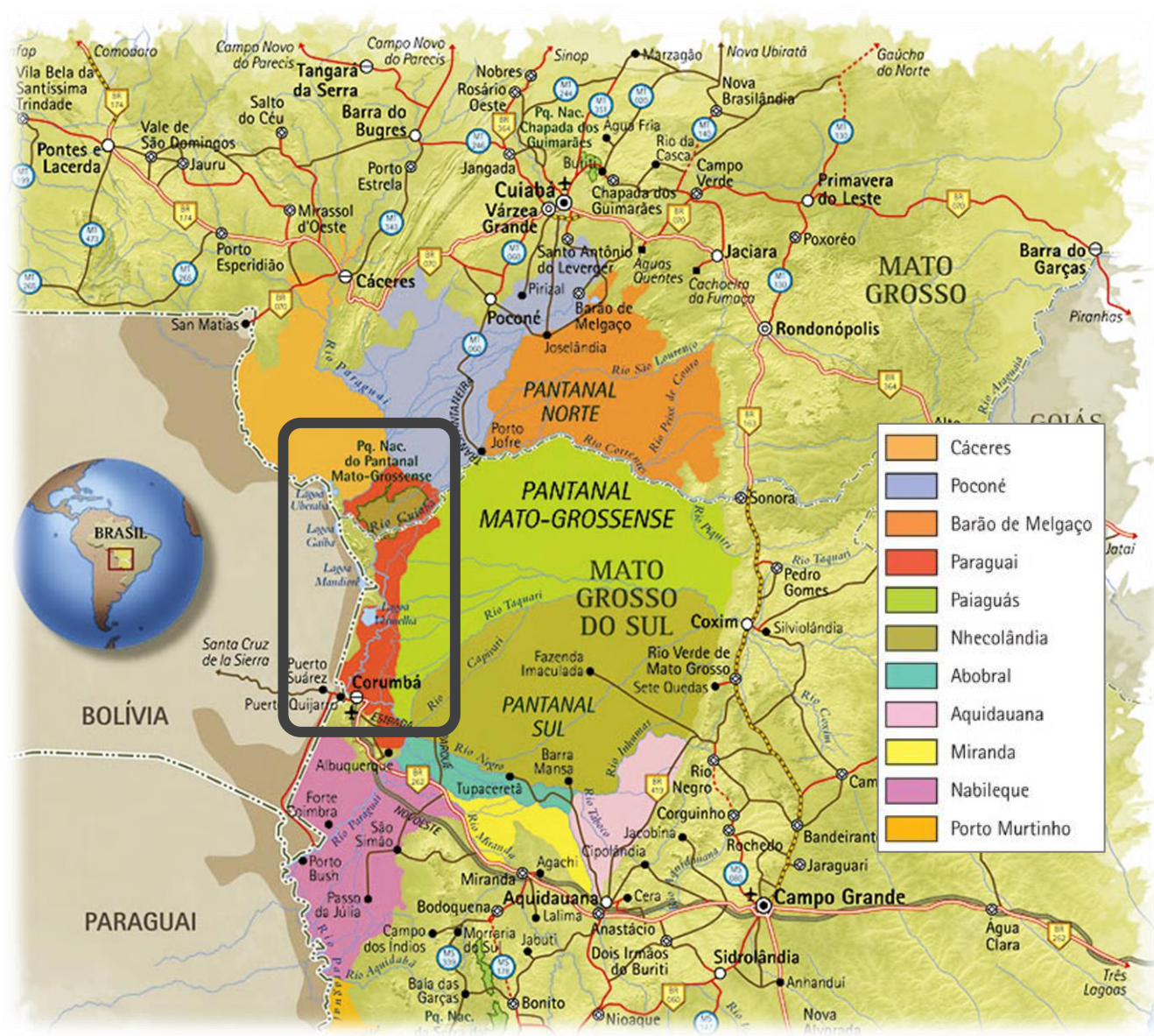


# AMOLAR NETWORK

## 1. Region

**Throughout the borders of the Pantanal Mato-Grossense, next to Bolivia.**

**Serra do Amolar** and its surroundings start at 100km from the urban part of Corumbá, state of Mato Grosso do Sul (MS) and extend through 80km to southeast-northwest direction, reaching the border with the state of Mato Grosso (MT).



Map: Guia UNIBANCO



# AMOLAR NETWORK

## 2. Nature

**National and international institutions have acknowledged the importance of conserving Serra do Amolar at a global level.**



For its incredible biodiversity, Brazil's Ministério do Meio Ambiente ("Ministry of Environment") qualifies the region as an **"Extremely High Priority" conservation site.**



Due to its water potential, the Pantanal Matogrossense National Park – neighboring Serra do Amolar – is considered a **Wetland of International Importance** by the **Ramsar Convention** as one of the wetlands that must be preserved worldwide.

All the Pantanal site is qualified by UNESCO as a **Biosphere Reserve.**



Since 2000, the Protected Sites Complex of the Pantanal (Pantanal National Park, Acurizal Reserves, Penha, Dorochê and Rumão ao Oeste) carries the title of **World Heritage Site**, also granted by UNESCO.

### Marsh deer

*Blastocerus dichotomus*

Foto: Andre Zumak





# AMOLAR NETWORK

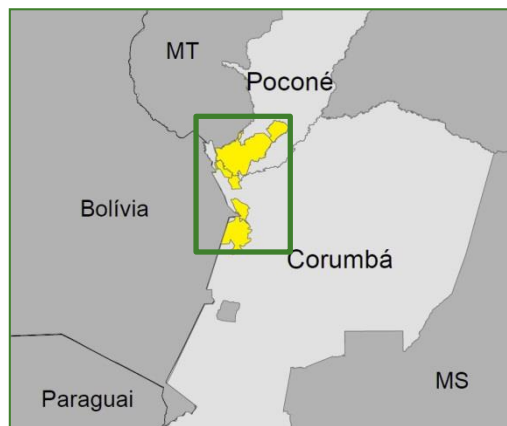
## 3. Socioeconomic context

The local population is comprised of around 70 families. The major part of them has an average monthly income of up to half a national minimum wage and lives in homes with two rooms only, located in federal owned lands.

Nearly 90% of riverside population is concentrated in **Barra do São Lourenço (1)** and **Paraguai-Mirim (3)** surroundings. The remaining 10% are spread in between these two communities, such as **Amolar (2)** and **Aterro do Binega (4)**.

There are three schools working in the region:

- 🏠 **Escola Municipal Rural Pólo Barra do São Lourenço**, at Barra do São Lourenço.
- 🏠 **Escola Municipal Rural Pólo Paraguai-Mirim**, at the central Paraguai-Mirim.
- 📍 🏠 **Escola Municipal Rural Extensão Jatobazinho**, at the extreme south of Paraguai-Mirim.





# AMOLAR NETWORK

## 4. History

**In 2008, institutions from the private, public and non-profit sectors came together in order to jointly act on the protection of Serra do Amolar.**

The efforts for preserving biodiversity require the availability of large areas where wildlife corridors can grow and house as many animal and plant species as possible.

In 2005, **MMX** (mining company from **Grupo EBX**) acquired two properties in the southwest of Pantanal Matogrossense National Park, which later became **Private Natural Heritage Reserve (RPPN) Engenheiro Eliezer Batista (EEB)**, under the management of the non-profit **Instituto Homem Pantaneiro (IHP)**.

Right to the south of this reserve lies **Fazenda Santa Tereza**, bought in that same year by Teresa Bracher, whose main purpose was to watch over the area. After getting in touch with the reality of local communities and making an assessment on the major problems, Teresa founded **Acaia Pantanal**, a non-profit dedicated to acting on the social-educational context.

Alongside these agents, there joined **Fundação Ecotrópica**, owner of **Acurizal, Penha, Rumo ao Oeste** and **Dorochê** northern RPPNs, and also **Pantanal Matogrossense National Park**. Together, these land owners were able to raise a wildlife corridor and enhance the efforts towards the conservation of the Pantanal. Then driven by the same goals and facing the same barriers, the group created the **Rede de Proteção e Conservação da Serra do Amolar (Amolar Network)** in 2008, as an initiative from IHP, thereby enlarging the protection area around the Pantanal Matogrossense National Park. As from 2009, the Amolar Network started operations within the region.

In 2013, EBX Group left the Amolar Network and, in 2014, **IHP** together with **a group of individual investors** acquired the right to purchase the Engenheiro Eliezer Batista RPPN. In that same year, Amolar Network signed an investment partnership with **VALE**. However, due to the international crisis and the

company's critical stage when iron ore had a fall in value in 2015, the support was suspended.

Still during 2015, the above said group of individual investors donated their share to **IHP** who had then 100% of the right to acquire Engenheiro Eliezer Batista RPPN.

Thanks to the donation by photographer **Sebastião Salgado** of 20 originals from his project "Gênesis", the Amolar Network gathered the resources needed to keep up with its activity from 2015 to 2018.

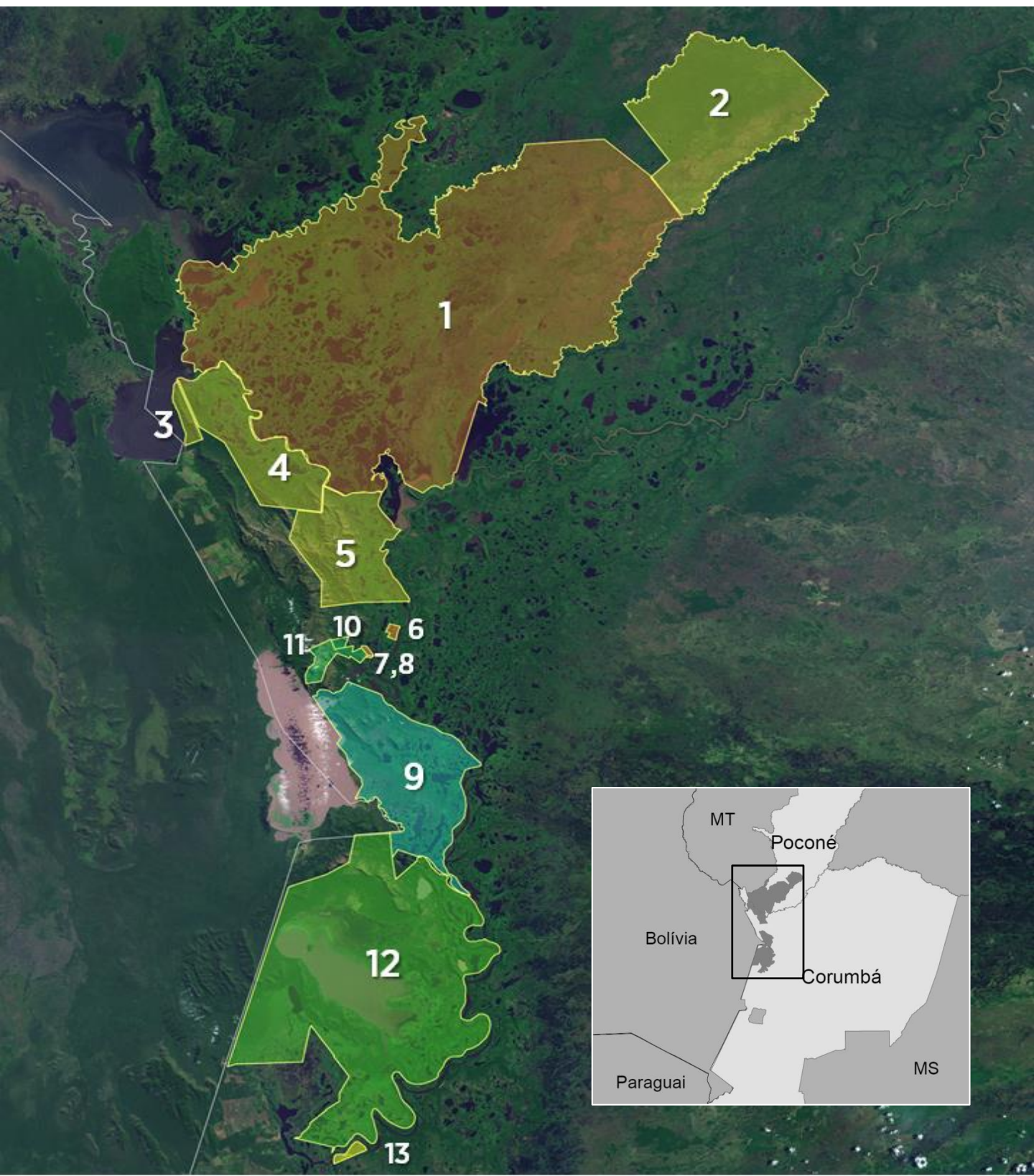
In 2017, the Amolar Network started a service providing branch of operations as a new fundraising stream. In 2018, the Network approved projects in two important edicts: the **"O Boticário Foundation"** - which for the first time opened an exclusive edict for wetlands - and **FUNLES** (Fund for the Defense and Reparation of Injured Diffuse Interests) - which allowed a great advance with the Geopantanal Platform.

In 2019, the Network had the support of services provided and **donations** to complement the resources for its maintenance. Seeking sustainability for the coming years, the group has invested in innovative projects, such as the validation of carbon credits associated with the conservation status of biodiversity in its areas, combining the concept of **"Nature Production"** with the appreciation of the Network's natural assets.

In 2020, Amolar Network had a great challenge. **Forest fires** consumed 90% of its territory, bringing financial fragility. However, important partnerships with **private companies and a specific fundraising campaign** to fight fires enabled the results described in this report and guaranteed, at a minimum, resources for preventing and fighting forest fires in 2021.

# AMOLAR NETWORK

## 5. Map





# AMOLAR NETWORK

## 5. Map



**FAZENDA**  
**Santa Tereza**



PROPERTIES	Legally Protected Area	Amolar Network's Outreach Area
1. Parque Nacional do Pantanal Matogrossense	135.581	135.581
2. RPPN Doroquê	26.518	26.718
3. RPPN Rumo ao Oeste	900	990
4. RPPN Acurizal	13.200	13.665
5. RPPN Penha	13.100	13.409
6. Fazenda São Gonçalo	-	180
7. Fazenda Santa Rosa	-	78
8. Sítio Serra Negra	-	16
9. RPPN Engenheiro Eliezer Batista	12.680	20.259
10. Fazenda Vale do Paraíso	-	184
11. Fazenda Morro Alegre	-	1.351
12. Fazenda Santa Tereza	-	70.119
13. Fazenda Jatobazinho	-	360
TOTAL (acres)	201.979	282.910

**Blue-crowned parakeet**  
*Thectocercus acuticaudatus*

Foto: Andre Zumak

A group of approximately ten blue-crowned parakeets are perched on thin, dark branches. The birds are primarily green with a distinct blue patch on their foreheads and a white ring around each eye. Their beaks are a pale pinkish-red. The background is a soft, warm gradient of yellow and orange, suggesting a sunset or sunrise. The overall composition is vertical, with the birds distributed across the frame.

**OUTCOMES**





## AMOLAR NETWORK ACTIONS

With the creation of the Amolar Network, the aim was to promote the conservation of the region and the sustainable development of the populations, mainly through the concept of Nature Production. A set of actions was identified, planned and implemented to meet the environmental and social needs of these areas.

In every move, as the Network identifies demands that are shared between the agents, it also respects their autonomy in operation.

	<p><b>MANAGEMENT OF AREAS</b></p> <p>Management and maintenance:</p> <ul style="list-style-type: none"><li>• Doroquê, Rumo ao Oeste, Acurizal, Penha and Engenheiro Eliezer Batista RPPNs.</li><li>• Fazenda Santa Rosa, Fazenda São Gonçalo, Fazenda Vale do Paraíso and Fazenda Morro Alegre.</li><li>• Sítio Serra Negra.</li></ul>
	<p><b>ENVIRONMENT WARDING</b></p> <ul style="list-style-type: none"><li>• Prevention of environmental issues</li><li>• Identifying and registering fauna species</li><li>• Checking upon river levels and analyzing hydric pulse</li></ul>
	<p><b>LAW ENFORCEMENT</b></p> <ul style="list-style-type: none"><li>• Support to Environmental Military Police around Amolar Network areas.</li></ul>
	<p><b>COMMUNICATION</b></p> <ul style="list-style-type: none"><li>• Enabling structures for communicating with Amolar Network areas entirely.</li></ul>



## AMOLAR NETWORK ACTIONS

	<p><b>PREVENTING AND FIGHTING FOREST FIRE</b></p> <ul style="list-style-type: none"><li>• Shelter for federal brigade squads from PrevFogo/Ibama.</li><li>• Support to quick response in forest fire ignition.</li><li>• Providing fire-fighting equipment, opening trails to ease the way to risky spots, and available boat.</li><li>• Implementation and structuring of the permanent “Alto Pantanal” Brigade, to prevent and fight fires in the Serra do Amolar region.</li></ul>
	<p><b>SOCIAL AND EDUCATIONAL ACTIONS</b></p> <ul style="list-style-type: none"><li>• Support actions for Environmental Education.</li><li>• Social support actions for communities surrounding the Amolar Network.</li></ul>
	<p><b>SCIENTIFIC RESEARCH</b></p> <ul style="list-style-type: none"><li>• Logistic support to research on such fields as Biology, Environmental and Forest Engineering, Geography, Pharmacology, Sociology, among others, aiming to produce relevant scientific knowledge.</li></ul>
	<p><b>TRAINING</b></p> <ul style="list-style-type: none"><li>• Contribution to training and professional development.</li></ul>
	<p><b>STRATEGIC ACTIONS</b></p> <ul style="list-style-type: none"><li>• Project “Cabeceiras do Pantanal”</li><li>• IHP Ecotourism – “Amolar Experience” Program</li></ul>





## Maintenance and area infrastructure



### Acurizal RPPN

**Trails:** monthly upkeep of land clearing, pruning of trees and trails connections.

**House headquarters:** monthly housekeeping of headquarters.

**Equipments:** preventive maintenance in all equipments of the reserve. Pintura e manutenção corretiva das estruturas pós-fogo.

**Water treatment station:** Implementation of a new water treatment station.

**Radio and communication system:** preventive and corrective maintenance of radio communication and internet connection.

**Solar energy system:** preventive and corrective maintenance of solar energy system and solar panels.





# OUTCOMES

## Amolar Network



## Maintenance and area infrastructure

### RPPN Eliezer Batista

**Equipment and structures:** preventive maintenance on all equipment in the reserve and electrical system. Painting and corrective maintenance of post-fire structures.

**Trails:** monthly upkeep of land clearing and pruning of trees, making them all useful to forest firefighting.

**Water treatment station:** Implementation of a new water treatment station.

**Sewage treatment station:** maintenance of ETE sewage treatment network.

**Radio and communication system:** preventive and corrective maintenance of radio communication and internet connection.







## Maintenance and area infrastructure

### Sítio Serra Negra

**Equipment and structures:** preventive maintenance on all equipment in the reserve and electrical system. Start of construction of the support base for the “Alto Pantanal” Brigade.

**Trails:** monthly upkeep of land clearing and pruning of trees, making them all useful to forest firefighting.

**Water treatment station:** Implementation of a new water treatment station.

**Sewage treatment station:** maintenance of ETE sewage treatment network.

**Radio and communication system:** preventive and corrective maintenance of radio communication and internet connection.

All waste produced in the area was transported to Corumbá and forwarded to its proper destination, in **12 trips** throughout the year.

### Fazendas Santa Rosa e São Gonçalo

**Trails:** monthly upkeep of land clearing and pruning of trees, making them all useful to forest firefighting.

#### Regularization of documentation

**Dorochê, Rumo ao Oeste, Penha** RPPNs and **Vale do Paraíso and Morro Alegre** farms were monitored, although they don't have a physical structure.





## 2020 Highlights

**54 trips** for biodiversity monitoring.

**11,880 km** of monitored river stretches.

**270 days** of monitoring.

**6 biologists, 10 veterinarians, 9 interns, 1 area manager and 2 field assistants.**

**Monitoring of the stretch** between the city of Corumbá and the RPPN Acurizal.

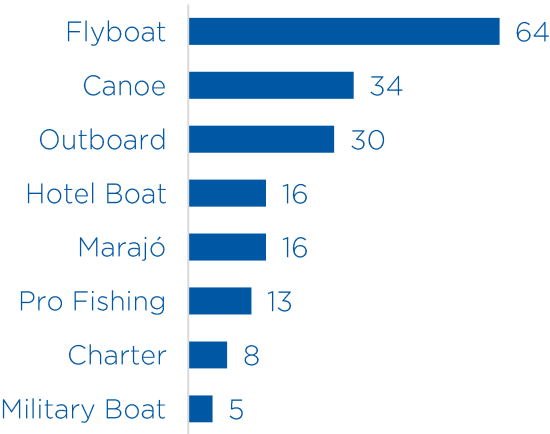
**5 conservation units** and **5 private units.**

**Environmental monitoring of the Paraguai river** in the stretch between the city of Corumbá and the RPPN Acurizal.

**Species monitoring** indicating environment quality.

**Registration and communication to the Environmental Military Police** about possible actions contrary to current environmental legislation.

**Monitoring** of water vessels: **186 vessels** were identified in **12 monitoring trips** covering a total of **2,640 km.**



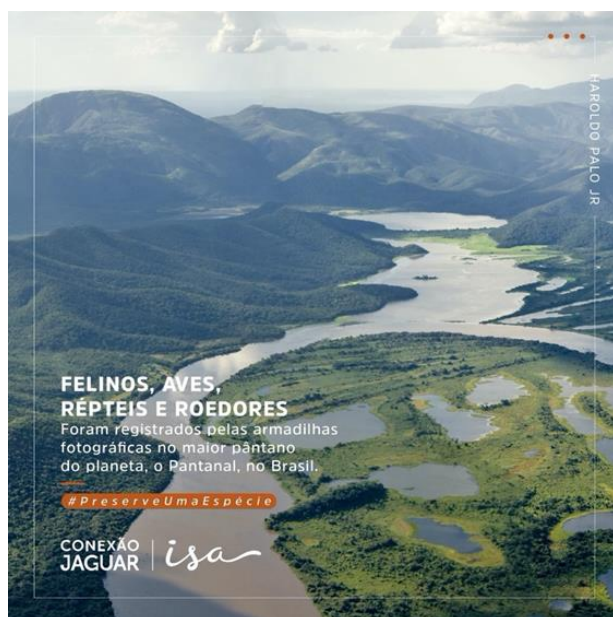


## Trap Cameras

In 2020, **camera traps** were used to monitor bioindicator species in Serra do Amolar. In a sampling effort carried out between December 2019 and February 2020, **48 cameras** were installed. From the records, we identified **49 species**, **32** of which were **mammals**. Eight were jaguars and six were giant otters, which are endangered species. Giant armadillos and tapirs were also seen in the images.

This survey is part of the “**Conexão Jaguar**” **Project**: with the objectives of contributing to the conservation of biodiversity, mitigation of climate change and local development, the **ISA** group and **ISA CTEEP**, in alliance with **Panthera** and **South Pole**, launched in Brazil, at the end of 2019, the first project of the “**Conexão Jaguar**” **Program** in partnership with the Amolar Network.

Since 2016, the **ISA** group, of which **ISA CTEEP** is a part, has invested in and financed the structuring and development of **forest carbon** projects with the potential to generate credits certified under international standards. This is the fifth program conducted by the company and the second largest in territorial extension. The other four initiatives take place in Colombia and Peru.



**FELINOS, AVES,  
RÉPTEIS E ROEDORES**  
Foram registrados pelas armadilhas  
fotográficas no maior pântano  
do planeta, o Pantanal, no Brasil.

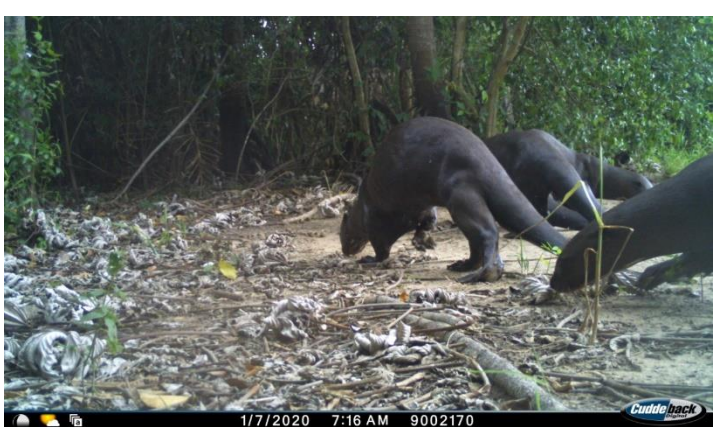
#PreserveUmaEspécie

CONEXÃO  
JAGUAR | isa



# OUTCOMES

Amolar Network







## Projects: Felinos Pantaneiros + Conexão Jaguar



**Monitoring by trap cameras** and active search for evidence of jaguars and pumas in Serra do Amolar.

**Wildlife rescue** in Serra do Amolar.

**Support** to Fundação do Meio Ambiente de Corumbá.

**Assistance** in Serra do Amolar.

Participation in several **video conferences** and **events** for results dissemination.

Approximately **5,000 km** covered.

BrPec: **4 visits to monitor** the electric fence structure implemented as an anti-predation strategy for crops by wild peccaries. **1,476 km** covered by car.





Rede de Proteção  
e Conservação  
da Serra do Amolar

## Environmental Military Police



**37 days** of inspection.

**708 people** were approached, including **133** amateur fishermen, **63** professional fishermen and **469** riverside fishermen.

**23 amateur** fishing boats, **16 professional** fishing boats and **6 hotel boats** were approached.

In all, **41 private ranches** were inspected.



## Communication System

**6 periodic maintenance trips** throughout the Amolar Network, with battery replacement, communication system update and equipment maintenance.

**6 corrective maintenance trips**, updating the communication system affected by forest fires.



# OUTCOMES

## Amolar Network



preventing  
and fighting  
forest fire

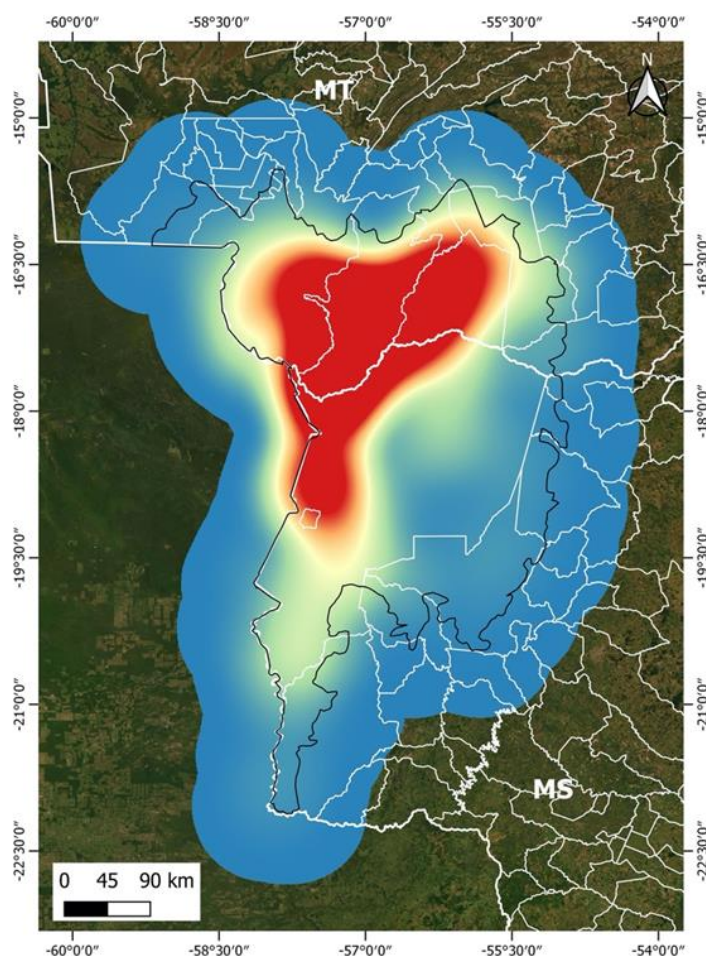


Rede de Proteção  
e Conservação  
da Serra do Amolar

## Fire

In the year 2020, we were hit by forest fires in a devastating way. The Serra do Amolar region was hit by fire intensely in almost its entirety. According to data from the **Laboratório de Aplicações de Satélites Ambientais do Departamento de Meteorologia da UFRJ (LASA)**, around **90%** of the areas that make up the Amolar Network were burned. Despite the conservation status created by the set of private reserves of the Amolar Network, the dimensions of the impact are still unknown.

The fires directly interfered with ongoing projects, such as **monitoring pantanal felines** with trap cameras that were burned in the field and the **carbon credit certification** project, an income alternative associated with protected areas. Also, as a result of the fire, we had to commit a lot of resources and reorganize the budget to meet the demands of logistics and firefighting, weakening the institution's sustainability. Until the months of July, the brigade members who worked in Serra do Amolar were hired by **Instituto Homem Pantaneiro**. Together with our technicians, the brigade members acted decisively in the firefighting that, in an unprecedented way, began in February.



### Legenda

□ Pantanal

Densidade de focos de calor (2020)

■ Baixa

■ Média

■ Alta



INSTITUTO HOMEM  
PANTANEIRO

# OUTCOMES

## Amolar Network



With the hiring of firefighters by **Ibama/PrevFogo** in July, we started to use the infrastructure of **Instituto Homem Pantaneiro** to keep firefighters in the field (accommodation and food). In addition to the IHP brigade, we also housed **firefighters from MS and PR, ICMBio brigade and IBAMA/PrevFogo**. In addition, IHP provided resources such as fuel and personnel for transport, communication and combat in all areas. However, human and equipment resources are scarce. Added to the numerous fire spots, our effort is already beyond what we can bear.

### Direct combat

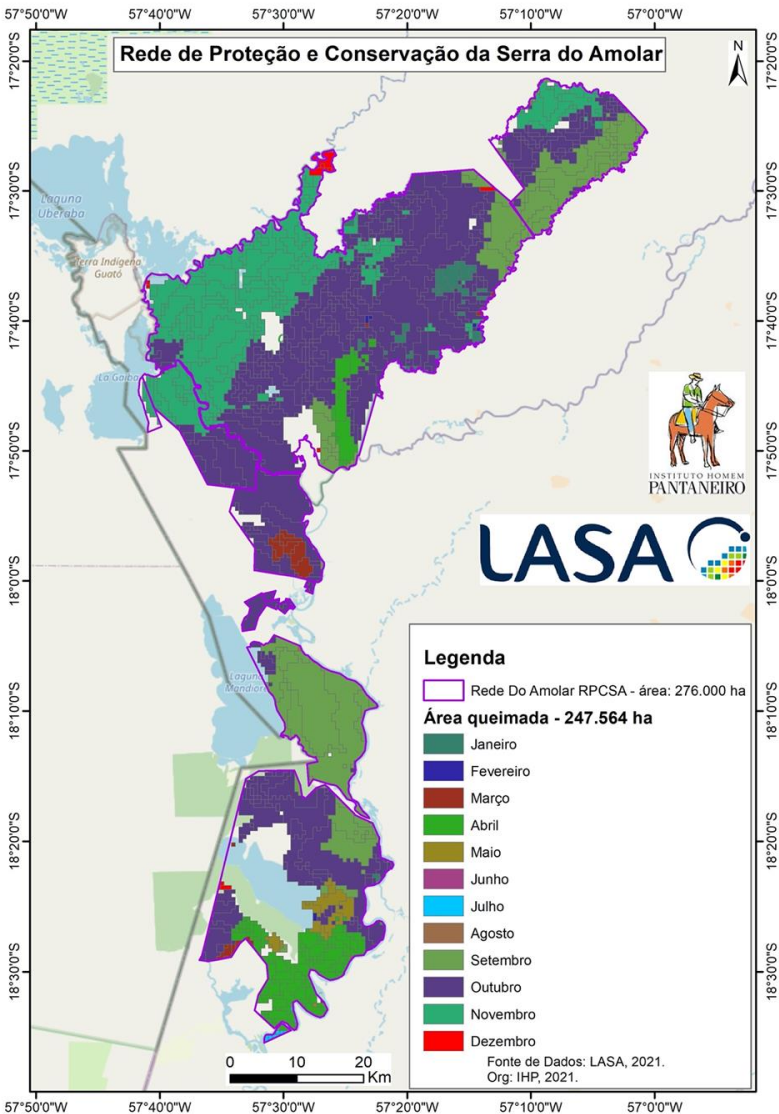
With the fires of 2020, we set up a command room at the headquarters of Acurizal RPPN to define combat strategies between the areas of the Parque Nacional do Pantanal Matogrossense and areas of Serra do Amolar.

### Communities

In Serra do Amolar there are **4 communities** that add up to about **150 families**.

The community is involved in the fight in every way: as volunteers in the brigades or supporting the brigade members.

Many families are without income as they depend on tourism and the fire season, added to the pandemic, made it impossible for boats to reach the region.





# OUTCOMES

## Amolar Network



preventing  
and fighting  
forest fire



Rede de Proteção  
e Conservação  
da Serra do Amolar

## 2020 highlights

**247,564 km<sup>2</sup>** of burned area: about **90%** of the territory of the Amolar Network.

More than **300 men** in the field, using the structure of the headquarters of the protected areas as a base for combat.

**11 collaborators** available to guide combat teams and work together with the brigade members.

**1 tractor** and **1 quadricycle** to support the transport of brigade members.

**Accommodation and support** for helicopter and combat aircraft crew for about **90 days**.

Consumption of more than **22 thousand liters** of fuel.

Shelter to more than **30 squads of firefighters**.

More than **5,500 meals** served and **15 thousand liters of drinking water**.

Distribution of more than **3 tons of food** to communities.

Distribution of more than **5 tons of fruit** for fauna assistance.

Opening of more than **40 km of firebreaks**.

It is important to emphasize that there is an ongoing fire-fighting plan in the large Pantanal ecoregion, which is coordinated and implemented by several institutions.

An important part of that plan is increasing the capacity to deal with the problem, as the current infrastructure is inadequate and undersized.

## Brigade training

With the climatic conditions indicating a very severe dry season and with the start of fires out of season (in February), we carried out training in Serra do Amolar, with the support of **Ibama/PrevFogo**, to train 20 new firefighters. These were fundamental in the fights that took place in 2020.







preventing  
and fighting  
forest fire



Rede de Proteção  
e Conservação  
da Serra do Amolar

## Assistance and fauna rescue

The **Instituto Homem Pantaneiro** team was in the field from September 22 to November 23, 2020, in the assistance operation for domestic and wild animals that suffered from the disaster caused by the fire in the Serra do Amolar region, MS, together with the teams from **GRETAP** and **CRMV-MS**.

During the operation period, animals were assisted, in addition to assistance for rescues, community support or health care for domestic animals. Some animals were treated at the site and others were transported for specialized care at **CRAS/Imasul** in Campo Grande.

Also during the operation, **5 tons of food** were distributed at welfare points at the **Engenheiro Eliezer Batista RPPN, Sítio Serra Negra, Acurizal RPPN, Fazenda Santa Tereza** and at some points on the banks of the Paraguai river affected by the fire, totaling more than **60 points** of food offering.

In addition, the riverside community received part of the food for distribution to animals in the region, increasing the support network and feeding area.







preventing  
and fighting  
forest fire



Rede de Proteção  
e Conservação  
da Serra do Amolar

## “Alto Pantanal” Brigade

We ended the year 2020 with funds raised and began the plan for the implementation of the “Alto Pantanal” Brigade, the first permanent brigade in the Pantanal. [www.brigadaaltopantanal.org.br](http://www.brigadaaltopantanal.org.br)

The “Alto Pantanal” Brigade arises from the need for **strategic actions** to reduce the impact of forest fires, in addition to **protecting the forest, life and property of populations**. With the establishment of the Brigade, it is expected:

1. Implement **permanent brigades** in charge of carrying out integrated fire prevention and management activities, in addition to direct combat, when necessary, in the Alto Pantanal region;
2. **Minimize the consequences** of forest fires, avoiding loss of life, material and environmental damage and consequent economic and social damage;
3. Develop **preventive actions**;
4. Improve forest fire **response actions**, as they are planned and disclosed, with great anticipation;
5. Awaken the **partners involved** in the preparation and training activities of the teams involved in the development of the plan;
6. **Mitigate the negative impacts** on the balance of the Pantanal biome.

To make the plan described possible, we started a campaign to create a **professional brigade with trained, equipped and salaried men** who will patrol the regions of Serra do Amolar, Parque Nacional do Pantanal Matogrossense and Parque Estadual Encontro das Águas. This region has the highest concentration of jaguars in the world and a fundamental area for the conservation of the environment and the economies of MT and MS.

## Support received

In August 2020, we were awarded an **International Flora and Fauna (UNESCO)** prize through the **Rapid Response Facility**, aiming to strengthen fire fighting in the Pantanal areas of the Parque Nacional Pantanal Matogrossense and surrounding RPPNs, which carry the **Natural Heritage of Humanity** title. The investment of this prize fund in equipment and structure was essential to reduce the risks of a more catastrophic event.

Other initiatives were very important for us to keep the teams in the field, as they collected resources, food, drinking water, veterinary material, PPE, firefighting material, among others, making our work feasible. **Private companies, groups of individuals, artists, and other non-governmental institutions from various sectors** were sensitized and supported our work.

With the “Alto Pantanal” Brigade campaign, we collected resources and managed to implement and subsidize, by December 2021, **two brigades** composed of **seven trained and equipped brigade members**, based in the Alto Pantanal region, in two main areas: Serra do Amolar and Porto Jofre.

We appreciate every donation, sharing and support of our work. Without community mobilization, we would not have made it.

# OUTCOMES

## Amolar Network



social-educational  
actions



Rede de Proteção  
e Conservação  
da Serra do Amolar

## Social actions

  Instituto Homem Pantaneiro (IHP)  
@IHPantaneiro - Organização não governamental (ONG)

# RODA DE CONVERSA

da EE Profa Odnei M.M. Santurbano

Quarta - Feira | 15h  
25.11 (Horário de Brasília)  
2020 | 14h (Horário de MS)

 MOINHO CULTURAL SUL-AMERICANO

Tema: Pantanal - Meio Ambiente  
Educação e Cultura Transformando Vidas

 Convidados: Marcia Rolon - Diretora Executiva do Instituto Moinho Cultural Sul-Americano.  
Cel. Angelo Rabelo - Diretor do Instituto do Homem Pantaneiro

Condução: Professoras e Professores da EE Profa Odnei M.M. Santurbano

Transmissão

 [ceprofessoraodnei@oficialmonteronetto.garcia](#)

 TV eodinei santurbano

Participation in **online community support events**.

**Distribution of food and food baskets** to the community affected by the pandemic and fires of 2020.

**Support in fighting fires** in communities.







Rede de Proteção  
e Conservação  
da Serra do Amolar

## Research support and collaborations

Even in the context of the pandemic, we support research projects that bring knowledge about the Pantanal as a whole.



**Instituto Arara Azul:** in addition to the Serra do Amolar recovery project, the meeting also discussed monitoring actions for scarlet macaws in urban areas of Corumbá and in conservation units under IHP management.



**“Mogu Matá” Project:** we support the project developed by several institutions to survey the impact of the 2020 fires on the fauna of the Pantanal.





# OUTCOMES

## Amolar Network



Rede de Proteção  
e Conservação  
da Serra do Amolar



**Environmental monitoring** of the rivers Prata, Mimoso, Miranda, Aquidauana.

More than **5,000 km** of rivers covered, even with the pandemic.

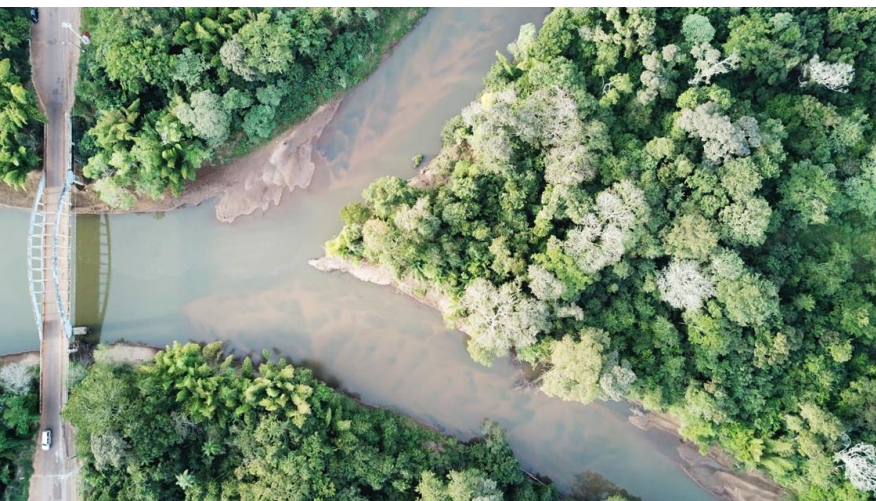
Application of **Rapid Assessment Protocols**.

**Monitoring** of environmental liabilities (camps, lack of riparian forest) and biodiversity.

**Monitoring** of vessels and **environmental education** of fishermen regarding current environmental regulations.

**Survey of landscape information** with drone and support to the Environmental Military Police.

Participation in the meeting of the **Comitê da Bacia Hidrográfica do Rio Miranda**.







Rede de Proteção  
e Conservação  
da Serra do Amolar

## Ecotourism

Despite the moment of the pandemic that started in March 2020, we carried out strategic actions for the implementation of **experience tourism**.

**One expedition** crossing the Serra do Amolar.

**Marking of trails** for crossing the Serra do Amolar.

**Six trips** to validate the “Amolar Experience” product.

Team **training**.

**Reception of fishing tourism companies** in the Corumbá region.

**Creation of a new business model** for the “Amolar Experience” program, within the concept of Nature Production.





Rede de Proteção  
e Conservação  
da Serra do Amolar

## “Alto Pantanal” Project

The “**Alto Pantanal**” Project was weakened by the pandemic in 2020. Some of the planned actions were linked to visits to areas of traditional communities and native peoples. Therefore, some actions are left to be performed when there is security for everyone involved.



**Meeting** for defining of future strategies.

**Expedition** to Botswana to recognize similar initiatives that have worked.

**Online events** to disseminate results and the concept of Nature Production.

**Video conference** with Leticia Larcher and Ricardo Borges (SPVS) on Nature Production.

**Meeting** with the Executive Secretary of the Ministry of Tourism.

**Expedition to the Okavango:** in February 2020, between the 11th and the 19th, before the pandemic, a team led by the president of the **IHP**, Angelo Rabelo, and composed of cameramen from **Eureka Filmes**, from Corumbá (MS), embarked for an immersion in the Okavango Delta region.

The expedition, which was supported by the **Documenta Pantanal** initiative, by the **S.O.S Pantanal** and also by **Alexandre Bossi** (Pandhora Investimentos), lasted ten days and is the result of an initial idea by businessman **Roberto Klabin** (owner of Refúgio Ecológico Caiman). After several trips to the African continent, he thought of bringing to Brazil the successful example of Botswana in relation to the conservation of nature areas and encouragement of observational tourism.

“We got to know the Okavango experience, which became an example of opportunities for entrepreneurs and the population, building a strategy in which everyone survives, nature is protected and people enjoy quality of life and business happens”, says Rabelo.



**Video conference** to discuss how the successful experience in the Okavango Delta, Botswana, can contribute, as a model, to this important Brazilian biome.





Rede de Proteção  
e Conservação  
da Serra do Amolar

## Environment talks

OJCI  
**LIVE**



**LETÍCIA LARCHER**

Bióloga e coordenadora técnica de projetos no Instituto Homem Pantaneiro

"Por que o Pantanal enfrenta uma das maiores ondas de incêndios em décadas?"

QUINTA-FEIRA  
**27 DE AGOSTO**  
ÀS 8H30

NO INSTAGRAM  
**@JUSTICAECO**

PROGRAMA  
**Justiça & Conservação**

Entrevistas transmitidas de segunda a sexta-feira, das 08h às 09h, também pela  
**Rádio Cultura**  
CURITIBA 930KHZ  
A mais livre de todas

Participation in Pantanal defense **online events**.

Participation in **online programs** to disseminate conservation and ecology issues.

Participation in **technical meetings** of the Committee on Burns in Brazilian Biomes, coordinated by Deputy Professor Rosa Neide.

Participation in **online events** with the theme of the fires and dissemination of results from IHP projects.

NOVO CORREDOR DO ECOTURISMO - ALTO PANTANAL

28/05 PANTANAL 19:00H BRASÍLIA 20:00H



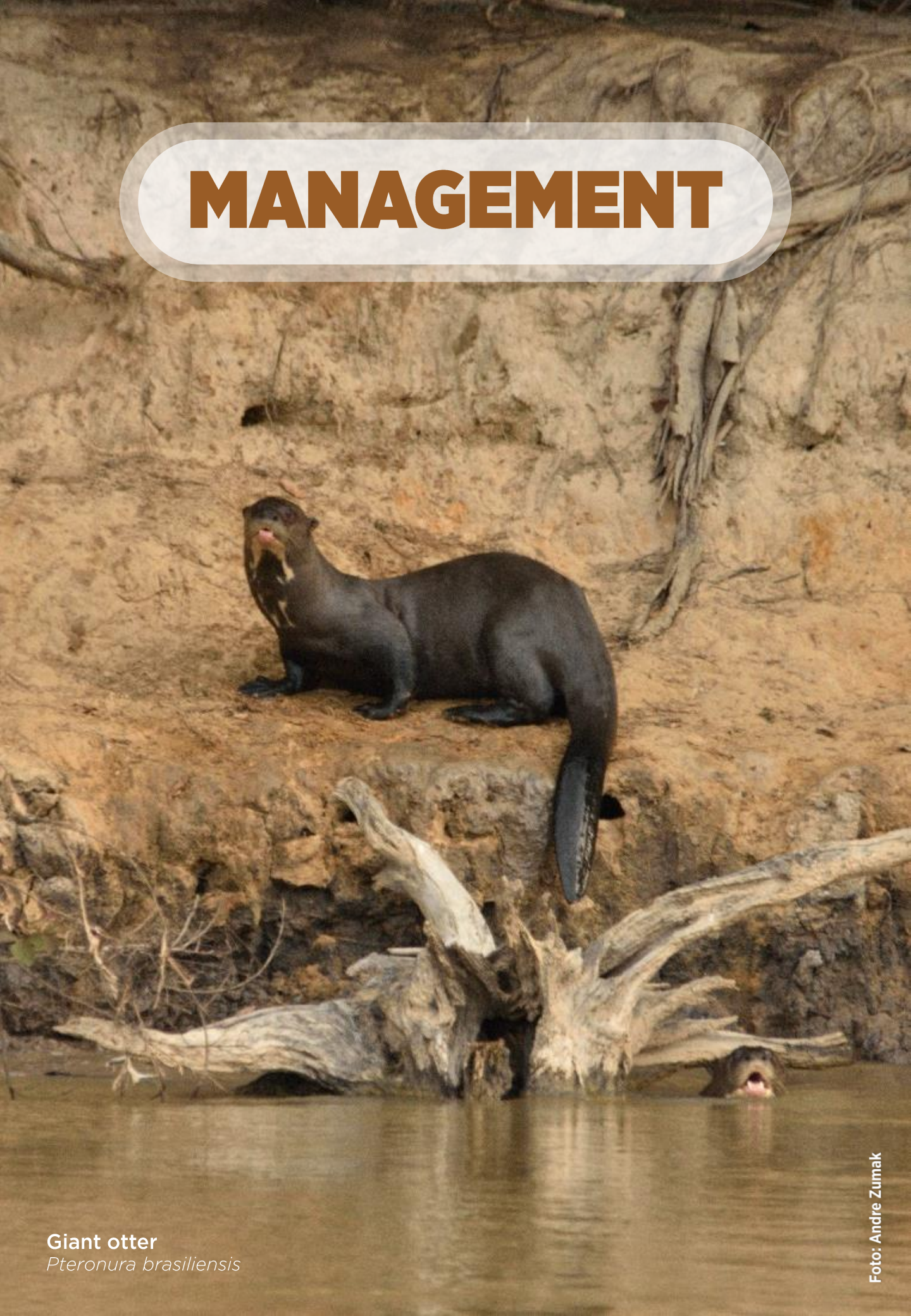
**Live!**

CORONEL RABELO  
IHP INSTITUTO HOMEM PANTANEIRO  
@ihp\_pantanal\_

AILTON LARA  
PJC PANTANAL JAGUAR CAMP  
@pantanaljaguarcamp



# MANAGEMENT



**Giant otter**  
*Pteronura brasiliensis*



# MANAGEMENT

## Independent Auditor's Report & Financial Statements

### INDEPENDENT AUDITOR'S REPORT

To the Management of

**INSTITUTO HOMEM PANTANEIRO**

Corumbá - MS

#### Opinion

We have audited the accompanying financial statements of INSTITUTO HOMEM PANTANEIRO ("Entity"), which comprise the balance sheet as of December 31, 2018, and the statement of surplus, statement of comprehensive income, and statement of changes in net assets and statement of cash flows for the year then ended, and a summary of significant accounting policies and other explanatory information.

In our opinion, the financial statements present fairly, in all material respects, the financial position of INSTITUTO HOMEM PANTANEIRO as of December 31, 2018, and its financial performance and its cash flows for the year then ended in accordance with accounting practices adopted in Brazil.

#### Basis for opinion

We conducted our audit in accordance with Brazilian and International Standards on Auditing (ISAs). Our responsibilities under those standards are further described in the "Auditor's responsibilities for the audit of the financial statements" section of our report. We are independent of the Entity in accordance with the relevant ethical requirements set forth in the Code of Ethics for Professional Accountants and the professional standards issued by the Federal Accounting Council and we have fulfilled our other ethical responsibilities in accordance with these requirements. We believe that the audit evidence we have obtained is sufficient and appropriate to provide a basis for our audit opinion.

# MANAGEMENT

## Independent Auditor's Report & Financial Statements

### Emphasis of matter

#### Deforestation fires:

In 2020, devastating deforestation fires occurred. Virtually all Serra do Amolar area was destroyed by fire. According to data provided by the Laboratory for Environmental Satellite Applications ("LASA") of the Department of Meteorology of the Federal University of Rio de Janeiro ("UFRJ"), around 90% of the areas comprised by "Rede do Amolar" (Amolar Network) were burnt. Despite the conservation status created by the set of private reserves in Rede do Amolar, the extent of the impacts is still unknown.

Due to this situation, taking strategic actions was required to mitigate the impact of the deforestation fires, protect the forest, life and properties of populations. Sources of income and donations were created for "Brigada Alto Pantanal Bri" (fire brigade), as reported in Note 18, and "Serra do Amolar Preservation", as reported in Note 19.

#### Financial statements expressed in US dollars (US\$)

As mentioned in note 2, the financial statements were prepared in accordance with the accounting practices adopted in Brazil. For reporting purposes, additionally, they are presented in American dollars (US\$). The financial statements have been remeasured from Brazilian reais (R\$) into US dollars (US\$) using the exchange rate prevailing at December 31, 2020 and 2019 for current assets and liabilities, and income and expenses. As a general rule, noncurrent assets and liabilities are remeasured at the historical acquisition rate whereas revenues and expenses, at the monthly average rate, resulting in an adjustment to equity due to the foreign-currency translation (adjustment to equity due to currency translation). However, as inflation rates in Brazil are relatively low, only the current rate was used to remeasure the financial statements as of December 31, 2020 and 2019. This simplified practice does not require a translation adjustment. However, if historical rates had been used, there would be no differences in the Entity's yearend net assets.

### Responsibilities of Management and those charged with governance for the financial statements

Management is responsible for the preparation and fair presentation of these financial statements in accordance with accounting practices adopted in Brazil, and for such internal control as Management determines is necessary to enable the preparation of financial statements that are free from material misstatement, whether due to fraud or error.

In preparing the financial statements, Management is responsible for assessing the Entity's ability to continue as a going concern, disclosing, as applicable, matters related to going concern and using the going concern basis of accounting in preparing the financial



# MANAGEMENT

## Independent Auditor's Report & Financial Statements

statements, unless management either intends to liquidate the Entity or to cease operations, or has no realistic alternative to avoid doing so.

Those charged with governance are responsible for overseeing the Entity's financial reporting process.

### Auditor's responsibilities for the audit of the financial statements

Our objectives are to obtain reasonable assurance about whether the financial statements taken as a whole are free from material misstatement, whether due to fraud or error, and to issue an auditor's report that includes our opinion. Reasonable assurance is a high level of assurance, but is not a guarantee that an audit conducted in accordance with Brazilian and International Standards on Auditing will always detect a material misstatement when it exists. Misstatements can arise from fraud or error and are considered material if, individually or in the aggregate, they could reasonably be expected to influence the economic decisions of users taken on the basis of these financial statements.

As part of an audit in accordance with Brazilian and International Standards on Auditing, we exercise professional judgment and maintain professional skepticism throughout the audit. In addition, we:

- Identify and assess the risks of material misstatement of the financial statements, whether due to fraud or error, design and perform audit procedures responsive to those risks, and obtain audit evidence that is sufficient and appropriate to provide a basis for our opinion. The risk of not detecting a material misstatement resulting from fraud is higher than for one resulting from error, as fraud may involve override of internal control, collusion, forgery, intentional omissions or misrepresentations.
- Obtain an understanding of internal control relevant to the audit in order to design audit procedures that are appropriate in the circumstances, but not for the purpose of expressing an opinion on the effectiveness of the Entity's internal control.
- Evaluate the appropriateness of accounting policies used and the reasonableness of accounting estimates and related disclosures made by management.
- Conclude on the appropriateness of Management's use of the going concern basis of accounting and based on the audit evidence obtained, whether a material uncertainty exists related to events or conditions that may cast significant doubt on the Entity's ability to continue as a going concern. If we conclude that a material uncertainty exists, we are required to draw attention in our auditor's report to the related disclosures in the financial statements or, if such disclosures are inadequate, to modify our opinion. Our conclusions are based on the audit evidence obtained up to the date of our

# MANAGEMENT

## Independent Auditor's Report & Financial Statements

auditor's report. However, future events or conditions may cause the Entity to cease to continue as a going concern.

- Evaluate the overall presentation, structure and content of the financial statements, including the disclosures, and whether the financial statements represent the underlying transactions and events in a manner that achieves fair presentation.

We communicate with those charged with governance regarding, among other matters, the planned scope and timing of the audit and significant audit findings, including any significant deficiencies in internal control that we identify during our audit.

São Paulo, April 16, 2021



SGS Auditores Independentes  
CRC 2 SP 020.277/O-5

Silvio de Jesus  
CRC 1 SP 141.676/O-7



# MANAGEMENT

## Independent Auditor's Report & Financial Statements

### INSTITUTO HOMEM PANTANEIRO

Balance sheets as of December 31, 2020 and 2019  
In US\$

<u>ASSETS</u>	Note	2020	2019
<b>CURRENT ASSETS</b>			
Cash and cash equivalents			
Cash		5	6
Banks – unrestricted		63,157	7
Banks – restricted		143	-
Operational reserve – Unrestricted	4	167,434	13,670
Project reserve – Restricted	5	25,648	35,869
Sustainability fund – Restricted	6	102,464	73,753
Receivables	7	3,149	2,240
<b>Total current assets</b>		<b>362,001</b>	<b>125,545</b>
<b>NONCURRENT ASSETS</b>			
Property and equipment	8	210,007	217,517
Intangible assets	9	2,500	6,966
<b>Total noncurrent assets</b>		<b>212,507</b>	<b>224,483</b>
<b>TOTAL ASSETS</b>		<b>574,508</b>	<b>350,028</b>

The accompanying notes are an integral part of these financial statements.

# MANAGEMENT

## Independent Auditor's Report & Financial Statements

### INSTITUTO HOMEM PANTANEIRO

Balance sheets as of December 31, 2020 and 2019  
In US\$

<u>LIABILITIES AND NET ASSETS</u>	Note	2020	2019
<b>CURRENT LIABILITIES</b>			
Suppliers of goods and services		8,249	8,047
Employee obligations	10	14,172	7,208
Leases	14	5,773	7,443
Payroll taxes	11	9,917	3,818
Taxes payable	12	1,679	1,162
Other payables	13	3,451	16,484
Funds - projects in progress	15	25,648	35,853
<b>Total current liabilities</b>		<b>68,889</b>	<b>80,015</b>
<b>NONCURRENT LIABILITIES</b>			
Leases	14	69,275	96,757
<b>Total noncurrent liabilities</b>		<b>69,275</b>	<b>96,757</b>
<b>NET ASSETS</b>			
Net worth		436,344	173,256
<b>Total net assets</b>		<b>436,344</b>	<b>173,256</b>
 <b>TOTAL LIABILITIES AND NET ASSETS</b>			
		<b>574,508</b>	<b>350,028</b>



# MANAGEMENT

## Independent Auditor's Report & Financial Statements

### INSTITUTO HOMEM PANTANEIRO

#### Statements of surplus for the years ended December 31, 2020 and 2019 In US\$

		2020	2019
<b>OPERATING INCOME</b>	Note		
<b>Restricted</b>			
Special agreements with government	17	10,948	16,563
Nongovernment sponsorship	17	4,718	69,382
Volunteer work	22	32,001	40,985
		<u>47,667</u>	<u>126,930</u>
<b>Unrestricted</b>			
Donations - Alto Pantanal Brigade	18	248,272	-
Donations - Serra do Amolar Preservation	19	151,148	-
Services rendered		30,517	63,045
Partnership Agreement - Instituto Acaia	17	67,696	85,042
Donations from legal entities		37,059	110,808
Donations from individuals		76,724	120,230
Income from TCRAE	20	125,753	117,908
Finance income		1,978	1,295
Other income		52	-
		<u>739,201</u>	<u>498,327</u>
<b>Other operating income – unrestricted</b>		<u>156</u>	<u>248</u>
Donations of fixed assets			
Other income		156	248
<b>Total income</b>		<u>787,025</u>	<u>625,505</u>
<b>OPERATING COSTS AND EXPENSES</b>			
<b>Environmental programs</b>			
Operating costs and expenses		(338,806)	(437,813)
Volunteer work	22	(32,001)	(40,985)
		<u>(370,807)</u>	<u>(478,798)</u>
<b>Gross revenue</b>		<u>416,218</u>	<u>146,707</u>
Operating and administrative expenses		(113,797)	(94,843)
<b>Surplus for the period</b>		<u>302,421</u>	<u>51,864</u>
Adjustments to equity		(354)	1,952
<b>Comprehensive income</b>		<u>302,067</u>	<u>53,816</u>

The accompanying notes are an integral part of these financial statements.

# MANAGEMENT

## Independent Auditor's Report & Financial Statements

### INSTITUTO HOMEM PANTANEIRO

#### Statements of changes in net assets for the years ended December 31, 2020 and 2019

In US\$

	Net assets	Translation adjustment	Surplus (deficit)	Total
<b>BALANCE AT DECEMBER 31, 2018</b>	<b>151,814</b>	<b>(27,568)</b>	<b>-</b>	<b>124,246</b>
Surplus for the period			51.864	51.864
Adjustments to net assets			1,952	1,952
Translation adjustment		(4.806)		(4.806)
Transfer of surplus	53.816		(53.816)	-
<b>BALANCE AT DECEMBER 31, 2019</b>	<b>205.630</b>	<b>(32.374)</b>	<b>-</b>	<b>173,256</b>
Surplus for the period			302,421	302,421
Adjustments to net assets			(458)	(458)
Translation adjustment		(38.875)		(38.875)
Transfer of surplus	301,963		(301,963)	-
<b>BALANCE AT DECEMBER 31, 2020</b>	<b>507.593</b>	<b>(71.249)</b>	<b>-</b>	<b>436,344</b>



# MANAGEMENT

## Independent Auditor's Report & Financial Statements

The accompanying notes are an integral part of these financial statements.

### **INSTITUTO HOMEM PANTANEIRO**

#### **Statements of cash flows for the years ended December 31, 2020 and 2019 In US\$**

	2020	2019
<b>OPERATING ACTIVITIES</b>		
Surplus for the year	302,421	51,864
<b>Increase (decrease) in items not affecting cash:</b>		
Depreciation and amortization	14,257	19,613
Adjustment to net assets	(458)	1,952
Translation adjustment - Cash and cash equivalents	(27,667)	(3,400)
<b>Decrease (increase) in assets</b>		
Receivables	(1,412)	852
<b>Increase (decrease) in liabilities</b>		
Suppliers of goods and services	2,007	195
Employee obligations	8,582	(2,906)
Payroll of self-employed workers	-	-
Payroll taxes	6,956	(554)
Taxes payable	778	339
Other payables	(9,335)	12,304
<b>Cash provided by (used in) operating activities</b>	<b>296,129</b>	<b>80,259</b>
<b>INVESTING ACTIVITIES</b>		
Increase in property and equipment and intangible assets	(52,650)	(110,486)
<b>Cash provided by (used in) investing activities</b>	<b>(52,650)</b>	<b>(110,486)</b>
<b>FINANCING ACTIVITIES</b>		
Proceeds from projects in progress	(2,160)	(38,596)
Increase (decrease) in leases	(5,774)	104,200
<b>Cash provided by (used in) investing activities</b>	<b>(7,934)</b>	<b>65,604</b>
<b>Increase (decrease) in cash and cash equivalents</b>	<b>2235,545</b>	<b>35,377</b>
Cash and cash equivalents at beginning of period	123,306	87,929
Cash and cash equivalents at end of period	358,851	123,306
<b>Increase (decrease) in cash and cash equivalents</b>	<b>235,545</b>	<b>35,377</b>

# MANAGEMENT

## Independent Auditor's Report & Financial Statements

The accompanying notes are an integral part of these financial statements.

### **INSTITUTO HOMEM PANTANEIRO**

#### **Notes to the financial statements for the years ended December 31, 2020 and 2019 In US\$**

---

#### **1. GENERAL INFORMATION**

Instituto Homem Pantaneiro ("Entity") is a private nonprofit entity, having administrative, finance and net asset autonomy, headquartered in the city of Corumbá, State of Mato Grosso do Sul. The Entity has indeterminate duration and nation-wide coverage.

The purposes of the Entity are the following:

- a) Promote, support, coordinate, develop, participate in and execute programs, plans, projects, activities, organization and viability of events related to education, monitoring, control, research, preservation and conservation of the environment, natural resources, and the environmental security quality;
- b) Promote, support, disclose, coordinate, develop, participate in and execute programs, plans, projects, activities, organization and viability of events related to education, research, training, qualification and empowerment of human resources in the environmental area;
- c) Promote, support, disclose, coordinate, develop and execute studies, environmental consulting, assessment, reports and environmental impact;
- d) Provide services and consulting to government and nongovernment institutions, private and state-owned companies, individuals and legal entities, in areas such as education, training, empowerment and professional qualification, planning, performance of all activities, organization and viability of events related to the environment, natural resources, quality and environmental security, as well as in all areas covered by its purposes and related activities.

#### **2. PRESENTATION OF FINANCIAL STATEMENTS**

The financial statements have been prepared in accordance with accounting practices adopted in Brazil, which comprise the Brazilian Corporate Law and the technical pronouncements, instructions and interpretations issued by the Accounting Pronouncements Committee ("CPC"), and specifically ITG 2002 (R1), applicable to Nonprofit Entities and other supplementary provisions.

The financial statements were prepared in accordance with accounting practices adopted in Brazil. For reporting purposes, additionally, they are presented in American dollars (US\$). The financial statements have been remeasured from Brazilian reais (R\$) into US



# MANAGEMENT

## Independent Auditor's Report & Financial Statements

dollars (US\$) using the exchange rate prevailing at December 31, 2020 and 2019 for current assets and liabilities, and income and expenses. As a general rule, noncurrent assets and liabilities are remeasured at the historical acquisition rate whereas revenues and expenses, at the monthly average rate, resulting in an adjustment to equity due to the foreign-currency translation (adjustment to equity due to currency translation). However, as inflation rates in Brazil are relatively low, only the current rate was used to remeasure the financial statements as of December 31, 2020 and 2019. This simplified practice does not require a translation adjustment. However, if historical rates had also been used, there would be no differences in the Entity's yearend equity.

### 3. SIGNIFICANT ACCOUNTING POLICIES

#### a) Functional and presentation currency

The financial statements are presented in Brazilian reais and US dollars – US\$.

#### b) Income and expense recognition

Income and expenses are recorded on the accrual basis.

#### c) Accounting estimates

The preparation of financial statements requires the use of estimates to account for certain assets, liabilities and other transactions. Therefore, the financial statements include estimates relating to provisions, receivables and other. Actual results may differ from these estimates.

#### d) Financial instruments

Non-derivative financial instruments are comprised of cash and cash equivalents, accounts and other receivables, and accounts and other payables.

#### e) Current and noncurrent assets

##### Cash and cash equivalents

Amounts recorded in cash and cash equivalents refer to bank accounts and highly liquid short-term investments with an insignificant risk of change in fair value, and which are considered equivalent to cash.

##### Short-term investments

Stated at cost plus income earned through the end of the reporting period, not exceeding fair or realizable values.

# MANAGEMENT

## Independent Auditor's Report & Financial Statements

### Property and equipment

Represented by the rights acquired in tangible assets to be held and used in the Entity's operations or exercised for this purpose, including those originating from operations that transfer risks, rewards and controls over the Entity's assets.

Stated at cost, less accumulated depreciation calculated under the straight-line method based on the estimated useful life of the assets.

### Intangible assets

Correspond to rights acquired in intangible assets that are maintained or used in the Entity's operations or exercised for this purpose. Intangible assets with finite useful lives are generally amortized on a straight-line basis over the period they are expected to generate economic benefits.

### f) Current and noncurrent liabilities

Stated at known or estimated amounts, plus charges, inflation adjustment and/or changes in exchange rates incurred through the date of the statement of financial position, when applicable. When applicable, current and noncurrent liabilities are stated at present value based on interest rates that reflect the term, currency and risk of each transaction.

### Provisions

Provisions are recognized when the Entity has a legal or constructive obligation as a result of a past event and it is probable that an outflow of funds will be required to settle the obligation. Provisions are recorded based on the best estimates of the risk involved.

## 4. OPERATIONAL RESERVE – Unrestricted

	2020	2019
Short-term investments	167,434	13,670
<b>Total</b>	<b>167,434</b>	<b>13,670</b>

Operational reserve corresponds to Instituto Homem Pantaneiro's own funds which are not pledged nor restricted to a certain project that is under execution. These reserves may be used for general application to finance the conservation of environment, natural resources, quality, and environmental safety as well as in all areas of the Institute's purposes and related activities.



# MANAGEMENT

## Independent Auditor's Report & Financial Statements

### 5. PROJECT RESERVE – Restricted

	2020	2019
Short-term investments	25,648	29,772
Short-term investments - Banco do Brasil	-	6,081
Other investments	-	16
<b>Total</b>	<b>25,648</b>	<b>35,869</b>

### 6. SUSTAINABILITY FUND – Restricted

	2020	2019
Financial investment - Itaú - 29512-3 (Premium DI)	102,464	73,753
Short-term investments	-	-
<b>Total</b>	<b>102,464</b>	<b>73,753</b>

Operational reserve corresponds to Instituto Homem Pantaneiro's own funds, which are not pledged nor restricted to a certain project that is under execution. These reserves may be used for general application to finance the conservation of environment, natural resources, quality, and environmental safety as well as in all areas of the Institute's purposes and related activities.

### 7. RECEIVABLES

	2020	2019
Advances to suppliers	2,398	2,072
Salary advances	77	137
Vacation pay advances	650	-
Recoverable taxes	24	31
<b>Total</b>	<b>3,149</b>	<b>2,240</b>

# MANAGEMENT

## Independent Auditor's Report & Financial Statements

### 8. PROPERTY AND EQUIPMENT

		2020			2019
	Annual depreciation rate	Cost	Accumulated depreciation	Property and equipment, net	Property and equipment, net
<b>Unrestricted</b>					
Furniture and fixtures	10%	8,477	(2,734)	5,743	3,162
Telephony terminals	20%	855	(381)	474	822
Machinery and equipment	10%	56,845	(14,023)	42,822	34,121
IT equipment	20%	2,360	(1,446)	915	-
Land		2,886	-	2,886	3,721
Vessels	10%	71,339	(18,337)	53,002	31,996
Properties	4%	35,263	(6,465)	28,798	38,948
<b>Restricted</b>					
Machinery and equipment	10%	957	(629)	328	547
IT equipment	20%	-	-	-	-
Properties - Leases		75,048	-	75,048	104,200
<b>Total</b>		<b>254,031</b>	<b>(44,014)</b>	<b>210,017</b>	<b>217,517</b>

#### Changes in property and equipment

	2019	2020			
	Net	Additions /write-offs	Exchange rate changes	Depreciation	Net
<b>Unrestricted</b>					
Furniture and fixtures	3,162	3,951	(709)	(671)	5,733
Telephony terminals	822	-	(184)	(164)	474
Machinery and equipment	34,121	20,689	(7,656)	(4,332)	42,822
IT equipment	-	1,120	-	(205)	915
Land	3,721	-	(835)	-	2,886
Vessels	31,996	32,663	(7,179)	(4,478)	53,002
Properties	38,948	-	(8,739)	(1,411)	28,798
<b>Restricted</b>					
Machinery and equipment	547	-	(123)	(96)	328
IT equipment	-	-	-	-	-
Properties - Leases	104,200	(5,773)	(80,821)	-	75,048
<b>Total</b>	<b>217,517</b>	<b>52,650</b>	<b>(48,795)</b>	<b>(11,355)</b>	<b>210,017</b>



# MANAGEMENT

## Independent Auditor's Report & Financial Statements

### 9. INTANGÍVEL

	Annual amortization rate	2020		2019	
		Cost	Accumulated depreciation	Property and equipment, net	Property and equipment, net
Software geomonitoring	20%	30,673	(28,173)	2,500	6,966
Software - computers	20%	51	(51)	-	-
<b>Total</b>		<b>30,725</b>	<b>(28,225)</b>	<b>2,500</b>	<b>6,966</b>

### 10. EMPLOYEE OBLIGATIONS

	2020	2019
Salaries payable	5,575	2,196
Accrued vacation pay	8,598	5,012
<b>Total</b>	<b>14,172</b>	<b>7,208</b>

### 11. PAYROLL TAXES

	2020	2019
Social Security Contribution (INSS)	5,165	1,663
Severance Pay Fund (FGTS)	1,660	389
PIS on payroll	184	48
Union dues	30	38
Accrued taxes on vacation pay	2,880	1,679
<b>Total</b>	<b>9,917</b>	<b>3,818</b>

### 12. TAXES PAYABLE

	2020	2019
Withholding income tax – individuals	732	443
Withholding income tax - legal entities	107	123
Service tax (ISS)	503	208
Other payables	336	387
<b>Total</b>	<b>1,679</b>	<b>1,162</b>

# MANAGEMENT

## Independent Auditor's Report & Financial Statements

### 13. OTHER PAYABLES

	2020	2019
Advances from customers	1,923	15,230
Reimbursable expenses	62	80
Cost-of-living allowance	826	-
Electric power	623	286
Water	-	-
Telephone	18	888
<b>Total</b>	<b>3,451</b>	<b>16,484</b>

### 14. LEASES

Type	Finance charges	Current		Noncurrent	
		2020	2019	2020	2019
Property leases	IGPM p.a.	5,773	7,443	69,275	96,757
<b>Total</b>		<b>5,773</b>	<b>7,443</b>	<b>69,275</b>	<b>96,757</b>

Refers to the lease of properties: Fazenda Acurizal, Fazenda Penha and Fazenda Rumo Oeste, owned by ECOTRÓPICA – Fundação de Apoio à Vida nos Trópicos. The lease contract is effective until November 22, 2033.

In 2020, IHP and Ecotropica agreed not to adjust lease contracts, with a 5-year grace period, considering the Institute's financial scenario, the high IGP-M cost for 2020, and the amount invested by IHP to protect areas affected by the deforestation fires occurred in 2020. IHP's attorney (Dr. Sebastião Rolon Neto) is currently preparing an addendum to the lease contract to formalize such agreement.



# MANAGEMENT

## Independent Auditor's Report & Financial Statements

### 15. FUNDS - PROJECTS IN PROGRESS

Special agreements with government – Restricted short-term investments

Type and Agency	Related responsibilities	2020 US\$	2019 US\$
Vale S.A.	Refers to the single installment released under Project Cabeceiras do Pantanal. The purpose of the project is to cooperate with the production of qualified environmental information about Pantanal, particularly springs and Permanent Preservation Areas (APPs) in Alto Paraguai Basin (BAP). The Project seeks to create or strengthen mechanisms whereby social, economic and scientific evaluations may be converted into quality information for the planning and definition of environmental policies.	-	6,081
3 PRONAC 191717 - MEMORIAL DO HOMEM PANTANEIRO	Preparation and implementation of the "Homem Pantaneiro Memorial"	25,648	29,772
<b>Total</b>		<b>25,648</b>	<b>35,853</b>

### 16. PROVISION FOR RISKS

Provisions are recognized by the Entity's management based on its legal counsel's opinion in amounts aligned with estimated losses arising from lawsuits.

Likelihood of loss on lawsuits may be classified as:

- (a) Probable – one or more future events are more likely than not to occur.
- (b) Possible – one or more future events are more than remote but less than likely to occur.
- (c) Remote – one or more future events are unlikely to occur.

The Entity is not party to labor, civil and tax involving risks of losses. Therefore, recognizing a provision for risks was not necessary.

# MANAGEMENT

## Independent Auditor's Report & Financial Statements

### 17. SPONSORSHIPS AND SPECIAL AGREEMENTS – Revenues

#### Special agreements with government – Restricted

Type and Agency	Project	Related responsibilities	2020 US\$	2019 US\$
Fund for the Defense and Remediation of Diffuse and Aggrieved Interests (FUNLES), managed by the Secretariat for Environment, Economic Development, Production and Family Agribusiness).	GEOPANTANAL: Technology-enabling conservation tool.	-Execute the Work Plan; -Apply the fund received for executing the project; -Keep the accounting bookkeeping up-to-date; -Be responsible for payroll taxes; -Comply with the provisions of State Decree No. 14494; -Enable oversight and supervision by the Grantor; -Return any remaining balances; -Accountability for the funds received.	-	16,563
Pronac 191717 - Memorial do Homem Pantaneiro	PRONAC - Memorial do Homem Pantaneiro	Preparation and implementation of the "Homem Pantaneiro Memorial"	10,948	-
<b>Total</b>			<b>10,948</b>	<b>16,563</b>

#### Partnership Agreement – Instituto Acaia – Unrestricted

Entity	Project / partnership description	2020 US\$	2019 US\$
Instituto Acaia	Partnership agreement for paying the maintenance of the communications system in the areas covered by the RPCSA	5,964	57,012
Instituto Acaia	Partnership agreement for monitoring and oversight actions in the areas covered by the RPCSA	45,895	6,001
Instituto Acaia	Partnership agreement for developing Project	6,549	13,345



# MANAGEMENT

## Independent Auditor's Report & Financial Statements

	Alto Pantanal.		
Instituto Acaia	Transfer for payment of lease of ECOTRÓPICA areas.	5,773	8,683
Instituto Acaia	Transfer for emergency assistance to fight forest fires	3,516	-
<b>Total</b>		<b>67,696</b>	<b>85,042</b>

### Non-governmental sponsorships – Restricted

Type and Agency	Project	Related responsibilities	2020 US\$	2019 US\$
Vale SA	Environmental Monitoring of Rivers	Perform an ecological and environmental diagnosis of water springs and Permanent Preservation Areas (APP's) in the region, by identifying the conservation status, the economic activities and the utilization of the spring soil of Alto Paraguay Basin and its main water streams.	4,718	69,382
<b>Total</b>			<b>4,718</b>	<b>69,382</b>

### 18. DONATIONS - ALTO PANTANAL BRIGADE

	2020	2019
Revenues from donations - Alto Pantanal Brigade	248,272	-
<b>Total</b>	<b>248,272</b>	

Alto Pantanal Brigade was created due to the need to take strategic actions to mitigate the impact of the deforestation fires and protect the forest, life and properties of populations.

The purposes of Alto Pantanal Brigade are as follows:

- Implement permanent brigades to perform integrated fire prevention and handling activities, in addition to direct fire extinguishment, when necessary, in the Alto Pantanal region;

# MANAGEMENT

## Independent Auditor's Report & Financial Statements

- b) Minimize the consequences of the forest fires, avoiding tolls, material and environmental damages and the resulting economic and social losses;
- c) Develop preventive actions;
- d) Enhance actions to assist in case of forest fires as such actions are early planned and disclosed;
- e) Raise awareness of the partners involved in the activities relating to the preparation and training of the teams involved in the plan development; and
- f) Mitigate adverse impacts for the balance of Pantanal biome.

To make the plan above feasible, IHP's Management started a campaign to create a professional brigade with trained, equipped employees who will patrol the Serra do Amolar, Parque Nacional do Pantanal Matogrossense, and Parque Estadual Encontro das Águas regions.

To achieve this, Management made it feasible the following actions scheduled for 2021:

- a) Creation of two Permanent Fire Brigades in the Jaguar Corridor. One of the brigades will be based in Porto Jofre and the other in Serra do Amolar, with prevention patrols and initial firefighting in the area that cover Paraguai Mirim, Serra do Amolar, Parque Nacional do Pantanal, and Parque Estadual Encontro das Águas;
- b) Acquisition of PPE and equipment to fight fire which may increase the efficiency of the field brigade;
- c) Hiring and maintenance of brigade members by covering their expenses on transportation, meal, lodging, and compensation;

### 19. DONATIONS – SERRA DO AMOLAR PRESERVATION

	2020	2019
Donations - Serra do Amolar Preservation	151,148	-
<b>Total</b>	<b>151,148</b>	

In 2020, devastating deforestation fires occurred. Virtually all Serra do Amolar area was destroyed by fire. According to data provided by the Laboratory for Environmental Satellite Applications ("LASA") of the Department of Meteorology of the Federal University of Rio de Janeiro ("UFRJ"), around 90% of the areas comprised by "Rede do Amolar" (Amolar Network) were burnt. Despite the conservation status created by the set of private reserves in Rede do Amolar, the extent of the impacts is still unknown.

Instituto Homem Pantaneiro, in conjunction with GRETAP (Animal Technical Rescue Group - Pantanal/MS), have worked directly in the region, providing service, rescue, and assistance to Serra do Amolar's fauna, from August to December 2020. General activities consisted of commuting the team to the areas affected by fire to actively search for animals and their trails and carcasses and provide food in low or no availability. Also, support was provided to the local community by providing veterinarian service to needy domestic animals and offering fruits, vegetables, corn, and seed to inhabitants to encourage them to welfarism. During the



# MANAGEMENT

## Independent Auditor's Report & Financial Statements

operation period, 18 animals were assisted, of which 9 wild and 5 domestic. In a period of 60 days, IHP provided care to 9 cases and followed up the cases locally, and four fauna rescues, which involved commuting the animal to CRAS, in the city of Campo Grande.

These actions were financed by donations made in 2020. For 2021, as a continuation of this project, IHP understands that establishing a planning to understand which aspects were modified in relation to fires to establish the next steps and to monitor, evaluate, and allow the restoration of the region is urgent. Therefore, the purpose of Project "Amolar Sobrevive" is to design a restoration plan and the economic and social microzoning in the Serra do Amolar region, with experts from different areas of knowledge. Based on such plan, strategies for the planned actions to be implemented by IHP and its partners will be implemented.

### 20. INCOME FROM TCRAE (State Environmental Reserve Quota Certificates)

	2020	2019
Income from TCRAE (State Environmental Reserve Quota Certificates)	125,753	117,908
Other income	-	-
<b>Total</b>	<b>125.753</b>	<b>117,908</b>

#### TCRAE – State Environmental Reserve Quota Certificates:

SEMAGRO Resolution No. 673, of March 14, 2019, published on the Federal Official Gazette of March 22, 2019, provides the rules for legal reserve offset applicable to the State of Mato Grosso do Sul. Such Resolution amends other rules published in 2014 which implement and govern the procedures relating to the Rural Environmental Registry and on the "For a More Sustainable Mato Grosso" program.

As a strategy to pursue sustainability, IHP started legal procedures to comply with the requirements and use the funds provided by the TCRAE.

### 21. USE OF FUNDS

The Entity's funds were used in its institutional purposes, as specified in its Bylaws, as shown in the statement of its expenses and investments. Instituto Homem Pantaneiro has two sources of income: Donations and services provided. Income from services is used to finance the preservation of environment, natural resources, environmental quality and safety, as well as to carry out its statutory purposes and related activities.

# MANAGEMENT

## Independent Auditor's Report & Financial Statements

### 22. VOLUNTEER WORK

As prescribed by Resolution No. 1409 – Federal Accounting Council (CFC) ITG 2002 – item 19, volunteer work should be recognized at the fair value of the service provided, as if a cash disbursement had been made. According to Appendix A to this Resolution, volunteer work should be treated in income and expenses in the same amount, without affecting the entity's surplus or deficit.

Therefore, no payments were made for volunteer work, since services are not compensated, under Volunteer Work Law.

### 23. TAX EXEMPTIONS AND WAIVER

	2020	2019
Corporate income tax	82,597	14,607
Social Contribution on Net Profit (CSLL)	27,218	4,723
ISS-QN (service tax)	9,979	7,239
PIS (tax on income)	5,116	4,056
Cofins (tax on income)	23,611	18,720
<b>Total</b>	<b>148,520</b>	<b>49,345</b>

### 24. INSURANCE

The Entity does not have insurance coverage for its administrative building, as the property has been preserved as a historic site, and insurers do not provide coverage for heritage buildings.

### 25. PROPERTY PURCHASE RIGHTS

The rural properties named Fazenda Morrinhos and Fazenda Novos Dourados, located in the municipality of Corumbá, State of Mato Grosso do Sul, where Private Natural Reserve Engenheiro Elieser Batista was created, were acquired by Instituto Homem Pantaneiro (IHP) from MMX Corumbá Mineração S.A., under a Purchase and Sale Commitment dated August 11, 2014, amended on April 16, 2015 (Fazenda Novos Dourados) and an Assignment of Rights Commitment dated August 11, 2014 (Fazenda Morrinhos), for the amounts of US\$917,257 (R\$2,089,418.90) and US\$100,851 (R\$310,581.11), which have not yet been paid by the seller to the acquiring party, since conditions precedent contained in the Commitments have not yet been complied with.



# MANAGEMENT

## Independent Auditor's Report & Financial Statements

On August 11, 2014, the parties also executed a Lease Agreement. The price agreed upon for the lease – US\$63,400 (R\$600,000.00) – was paid by netting outstanding receivables in favor of the Entity which originated from the Partnership and Management, Maintenance and Performance of Conservation Programs Agreement entered into on January 01, 2010 and amended on February 02, 2011.

Instituto Homem Pantaneiro assigned 95% of the rights it held over the abovementioned properties to a group of individuals, which was formalized on December 10, 2012 under an Assignment of Purchase Rights Agreement, for US\$180,482 (R\$368,815.07) (Faz. Morrinhos) and US\$1,214,183 (R\$2,481,184.93) (Faz. Novos Dourados), to join efforts to continue the environment preservation activities and the scientific and environmental education projects being developed in the properties.

The interest in the partnership established between Instituto Homem Pantaneiro and the group of individuals was lost and, as a way to contribute to the preservation of Serra do Amolar, the amount of US\$88,364 (R\$350,000.00) initially received as down payment when the assignment of rights agreement referred to above was executed, was not returned. Such amount was received by the Entity as a donation.



Rede de Proteção  
e Conservação  
da Serra do Amolar



INSTITUTO HOMEM  
PANTANEIRO



### **Instituto Homem Pantaneiro**

Ladeira José Bonifácio, 171 - Porto Geral  
Corumbá, MS - Brasil | Fone: +55 (67) 3232-3303  
[www.institutohomempantaneiro.org.br](http://www.institutohomempantaneiro.org.br)  
[faleconosco@institutohomempantaneiro.org.br](mailto:faleconosco@institutohomempantaneiro.org.br)